



# PTS News



November  
2024

## Headteacher's Comment



Last half term was very busy and exciting time. We were all very excited to welcome Bea the school dog, who has joined us to help promote mental health among the pupils (and staff!). The children settled in their new classes beautifully and they have worked very hard with exciting visits to enhance their learning.

Year 3 had a brilliant time at Stonehenge learning all about life in the Stone Age.

Year 4 enhanced their learning about the Rainforest when they visited Marwell Zoo, specifically the Tropical House where they saw sloths, frogs, a crocodile monitoring lizard and many amazing birds.

Year 6 learned all about the impact of the New Forest in the Second World War and visited Beaulieu where special agents were trained in espionage.

Year 5 will be visiting Hengistbury Head as part of their coasts topic on Tuesday 19th November. Let's hope the weather is good!

On Monday 11th November, a small group of children from years 6 and 2 represented the school at the war memorial to remember those who have served and died to ensure we have our freedom. Year 6 visited the infant school to share a Remembrance Day assembly with the children which was lovely and we were very proud of them.

## Club information



### Tuesday

Netball, Football & Art clubs

### Wednesday

Gardening & Multi-skills

### Thursday

Gymnastics & Tag Rugby Club

### Friday

Activities Club 5:30pm - 7pm

The cost of Afterschool activity clubs remains at £1!

Reminder - Football boots, socks and shin pads must be worn for football.

## Autumn 2 PE Lessons

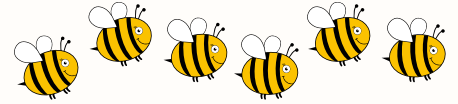


Day	1.00 – 2.00	2.00 – 3.00
Monday	Eagles	Barn Owls
Tuesday	Falcons	Red Kites
Wednesday		
Thursday	Barn Owls	Eagles
Friday	Falcons	Red Kites



LASTEST NEWS follow our Facebook page: [www.facebook.com/friendsopenningtonjuniorschool](http://www.facebook.com/friendsopenningtonjuniorschool)





# OAKHAVEN HOSPICE

Oakhaven is our chosen charity this year and on Friday 15th November children can wear mufti to school for a charitable donation to the Hospice. We realise that it is Children in Need day and if children want to wear spots or something for Children in Need, that is fine and a donation to Children in Need can be made at: <https://donate.bbcchildreninneed.co.uk/>



## THANK YOU!

Thank you for the food donations for our Harvest Festival. The Basics Bank were very grateful. We are very appreciative of the Basic Bank for supporting our school.

Thank you for supporting us with our fundraising efforts.



## CHRISTMAS RAFFLE



During the week commencing 2nd December we will be collecting items for our Christmas Hampers. The raffle will take place before the Activities Club on Friday 13th December. We would like donations of seasonal goodies: chocolates, biscuits, bottled drink, smellies etc. Children will be given extra housepoints for the items they donate!

## CHRISTMAS JUMPER DAY

We will be wearing our Christmas / Winter jumpers on Wednesday 18th when we have our Christmas Lunch.



## POND AREA

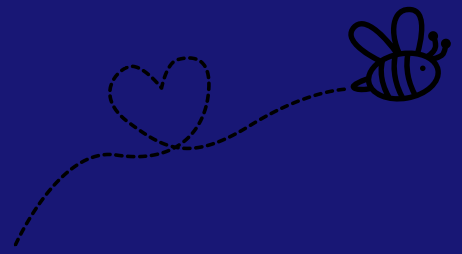
Last half term Charlie Dimmock, TV Gardener, came and gave some great advice for our pond area. We will be working on this area during the Summer term when the wildlife isn't hibernating and the young insects have grown. A big thank you to the WJ for arranging this visit.



## TROPHY

As you may have seen on our facebook page, we were lucky enough to have the Barclays Premiership Trophy visit the school. There were a lot of excited children and smiley faces - even Bea!





## TRIPS

Last half term, Year 6 visited Beaulieu Museum as part of their "Spies" topic. They learned about the spies that were based and trained in our local area and the significance of the New Forest during World War 2. Some of the children dressed up in period clothing for the trip.





## TRIPS

Our year 3 had a great visit to Stonehenge, as part of their History and English learning. They took part in a Discovery Workshop to help develop their understanding of the Stone Age.





# Important Dates

Friday 15th November - Mufti Day for Charity

w/c 2nd December - Donations for Christmas Hampers

Wednesday 11th December - Year 6 Height and Weight

Friday 13th December - Christmas Raffle

Wednesday 18th December - Christmas Jumper & Christmas Lunch

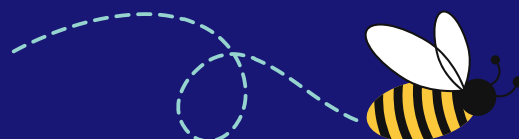
Friday 20th December - Last Day of Term

Tuesday 7th January - Spring Term 1

Monday 17th February - 1/2 Term

## Inset Days

- Monday 6th January 2025
- Friday 23rd May 2025



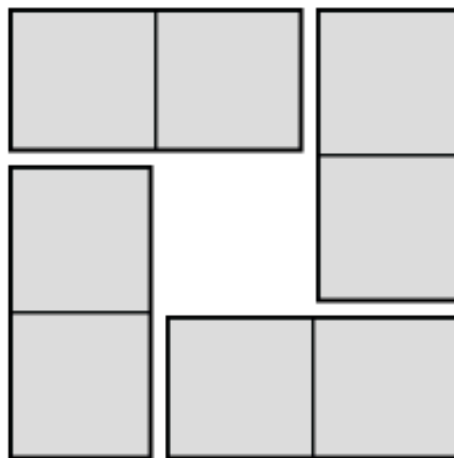
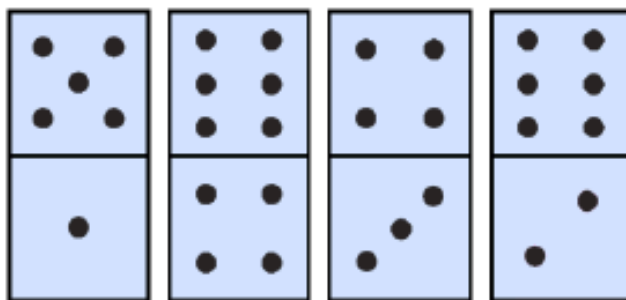
# Finding All the Possibilities Maths Problem

## How many solutions can you find?



4 Dom

Use these four dominoes to make a square that has the same number of dots on each side.



What did you do to try to solve this challenge?